

# Design Innovation Only Possible with OLED Signage

## In-glass Wallpaper OLED signage 55EG5CD/SD



In-glass wallpaper is an innovative display option in which OLED panels are fixed between two layers of tempered glass, one at the front and one at the back. As the surrounding structure is transparent, the display gives the impression that the signage is floating in the air and that the projection is coming directly from the glass pane. With its slim and sophisticated design and dual display, LG OLED signage is an excellent way to partition space while communicating your message using both sides of the panel.



### Why OLED Technology?

#### Perfect Black

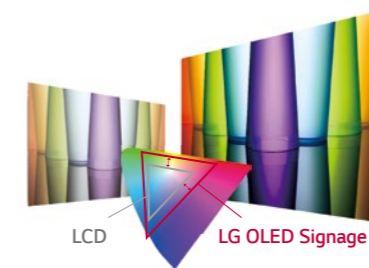
**Limitless contrast and deepest black**  
Self-lighting pixels switch off completely to reproduce black. No light bleeding. Absolute black offers infinite contrast.



LCD LG OLED Signage

#### Perfect Color

**Accurate & stable color reproduction**  
Self-lighting pixels bring colors to life with superb accuracy.



LCD LG OLED Signage

#### Perfect Viewing Screen

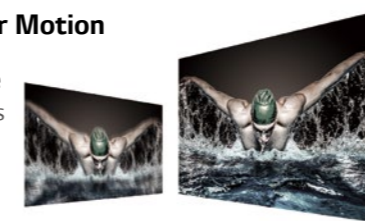
**Wide viewing angle**  
LG OLED Signage delivers awe-inspiring picture quality across the entire screen, even from wide viewing angles.



LCD LG OLED Signage

#### Crisp, Clear Motion

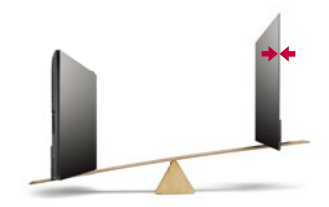
**Faster response time**  
LG OLED Signage provides a 5,000-times faster motion-picture response time, for perfectly clear images without blurring.



LCD LG OLED Signage

#### Perfect Design

**Slim and light**  
With just two layers, the LG OLED Signage display is unbelievably lightweight and thin.



LCD VS LG OLED Signage

Download LG Commercial Display Mobile App



Learn more [www.lg.com/b2b](http://www.lg.com/b2b)


YouTube [youtube.com/c/LGCommercialDisplay](https://youtube.com/c/LGCommercialDisplay)

LG may make changes to specifications and product descriptions without notice.  
Copyright © 2017 LG Electronics Inc. All rights reserved. "LG Life's Good" is a registered trademark of LG Corp.  
The names of products and brands mentioned here may be the trademarks of their respective owners.



# Design Innovation Only Possible with OLED Signage

## In-glass Wallpaper OLED signage 55EG5CD/SD



**Screen Size**  
55"

**EG5CD/SD**

- Depth: 13 mm
- Brightness: 400 cd/m<sup>2</sup> (APL 25%)
- Orientation: Portrait mode
- Interface: HDMI, DP, IR, RS232C, USB 3.0

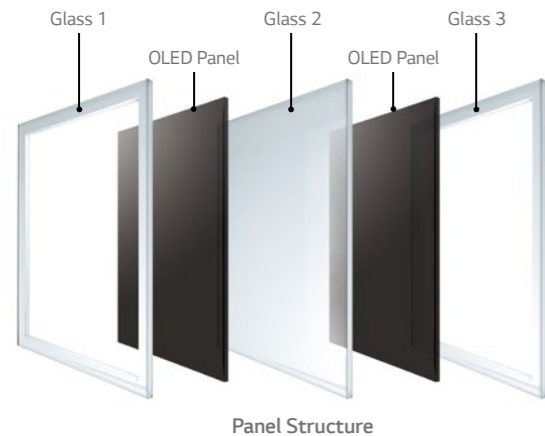
**18hr/7days** **SUPER SIGN™**

55EG5CD 55EG5SD

### Key Features

#### Glass Picture Effect

Consisting of slim glass panes and OLED panels, LG signage gives the impression that the image is being projected directly from glass itself.



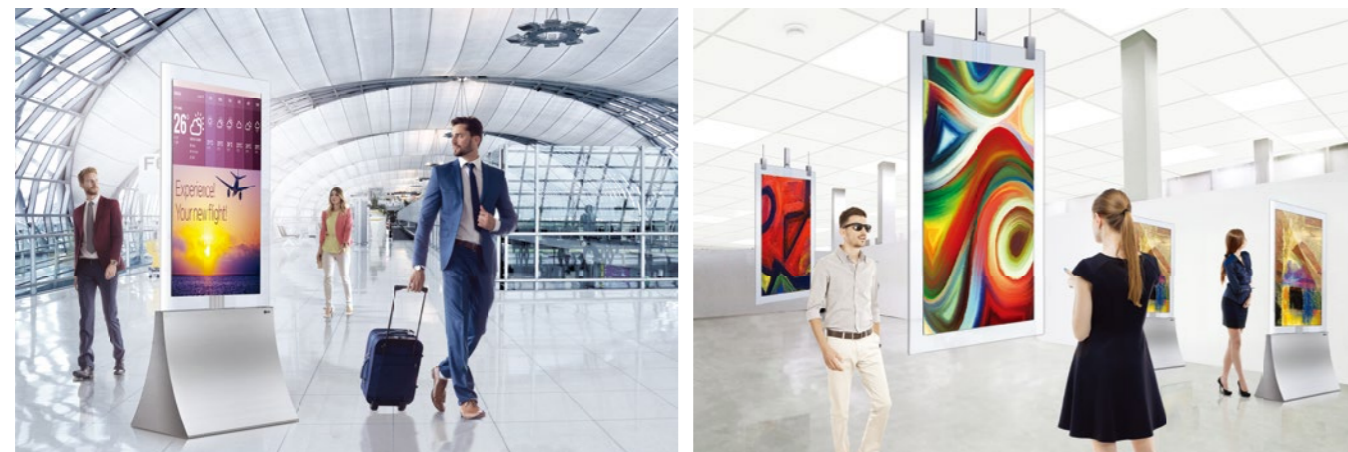
#### Two Types of Installation

There are accessories available specifically for hanging models and stand models.



#### Two Displays for Multiple Use

The OLED panels provide a two-way media experience and save space thanks to their innovative slim design.



### Specifications

	55EG5CD	55EG5SD		
<b>PANEL</b>	Screen Size	55"		
	Panel Technology	OLED		
	Aspect Ratio	16:9		
	Native Resolution	1,920 x 1,080 (FHD)		
	Brightness	100/400 cd/m <sup>2</sup> (APL 100%/25%) *Average Picture Level		
	Viewing Angle (H x V)	178 x 178		
	Response Time	1 ms (G to G), 8 ms (MPRT)		
	Operation Hours	18 hrs/7 days (Moving video only)		
	Orientation	Portrait		
	<b>CONNECTIVITY</b>	Input	HDMI (1+1), DP (1+1)	
Output		DP (1+1), Audio, IR out (w/RS232C OUT Port Share)		
External Control		RS232C in/out (1+1), RJ45 in/out (1+1), IR receiver (1+1), USB 3.0 (1+1)		
<b>PHYSICAL SPECIFICATION</b>	Bezel Color	Black		
	Bezel Width	(Off-bezel, with Glass)	(Off-bezel, with Glass)	
		(On-bezel, with Glass)	101.3 / 81.3 / 81.3 / 81.3 mm (U/B/L/R)	
		(On-bezel, w/o Glass, Only Panel)	107.9 / 87.9 / 88.5 / 91.6 mm (U/B/L/R)	
	Dimension (W x H x D)	(Head) 861.3 x 1,406.2 x 13 mm (w/o Hanging Acc.)	(Head) 872.7 x 2,050.9 x 500 mm (with Stand Accessory)	
		(T-Con Box) 312.2 x 213.4 x 16 mm (Signage Box) 412.6 x 222.4 x 64.3 mm	(T-Con Box) 312.2 x 213.4 x 16 mm (Signage Box) 412.6 x 222.4 x 64.3 mm	
Weight	(Head) 31.2 kg (T-Con Box) 1.6 kg (Signage Box) 4.3 kg	(Head) 37 kg (ACC-S-EG5D) 53 kg (T-Con Box) 1.6 kg (Signage Box) 4.3kg		
	Carton Dimensions (W x H x D)	1,880 x 1,015 x 363 mm 1,880 x 1,015 x 363 mm (Pallet: 1,800 x 363 x 120) 1,184 x 445 x 884 (ACC-S-EG5D)		
Packed Weight	71.4 kg (Glass Module 1ea, T-Con Box 2ea, Signage Box 2ea)			
<b>SPECIAL FEATURES</b>	Temperature sensor, Cooling FAN, ISM method, DPM select, DPM wake up, Energy saving, Motion eye care, File play with USB, internal memory (64 GB), USB cloning, Calibration mode, PM mode, Fail over, DP daisy chain			
<b>ENVIRONMENT CONDITIONS</b>	Operation Temperature	0°C to 40°C		
	Operation Humidity	10% to 80%		
<b>POWER</b>	Power Supply	100-240 V~, 50/60 Hz		
	Power Type	Built-in Power		
<b>POWER CONSUMPTION</b>	Typ.	190 W		
	DPM	3 W under		
	Power Off	0.5 W under		
<b>STANDARD (CERTIFICATION)</b>	Safety	UL / cUL / CB / TUV / KC		
	EMC	FCC Class "A" / CE / KCC		
	ErP/Energy Star	Yes / NA		
<b>MEDIA PLAYER COMPATIBILITY</b>	OPS-Type Compatible	Yes		
	External Media Player Attachable	Yes		
<b>SOFTWARE COMPATIBILITY</b>	Content Management Software	SuperSign Premium		
	Control and Monitoring Software	SuperSign Link		
<b>ACCESSORIES</b>	Basic	Remote controller (include battery 2ea), Power cord, QSG, HDMI cable (1m x 2ea for connection between T-Con box and signage box, 1.8m x 2ea), Power Hanness Cable (1m x 2ea for connection between T-Con box and signage box), IR receiver (2ea), Regulation book, Phone to RS232C gender (2ea), Jack cover, Signage box mounting bracket, T-Con box mounting bracket, FFC cable cover, Hanging Supporter front, Hanging supporter rear, Hanging supporter rear cover, FFC cable supporter assy, Ceiling bracket	Remote Controller (include battery 2ea), Power Cord, QSG, HDMI Cable (1m x 2ea for connection between T-Con box and signage box, 1.8m x 2ea), Power Hanness Cable (1m x 2ea for connection between T-Con box and signage box), IR receiver (2ea), Regulation Book, Phone to RS232C Gender (2 ea), Jack Cover, Signage Box Mounting Bracket, T-Con Box Mounting Bracket, FFC Cable Cover	
		Optional	OPS kit (KT-OPSA)	OPS kit (KT-OPSA)

※ 1+1 means 1 input for 1 each screen